



ROTOBEC

**SCRAP
SOLUTIONS**



ROTOBEC REVOLUTIONIZED THE SCRAP MARKET

through decades of innovation and knowledge within the industry. Our innovative designs are built for toughness and durability, which is how we have changed the game.

It's about giving it our all and raising the bar. Every component of our products are designed and manufactured in our production facilities in Sainte-Justine, Quebec (Canada) and in Littleton, New Hampshire (USA). The most advanced technologies are used throughout the process and the result is simply the best material equipment available out there.

Unbeatable quality and nothing less. This is the promise Rotobec has been delivering throughout the years wherever you are in the world. We have worked hard for you. This is why today Rotobec products are globally recognized and trusted, making us a world leader in the industry.

We are Rotobec.

CHANGING THE GAME.

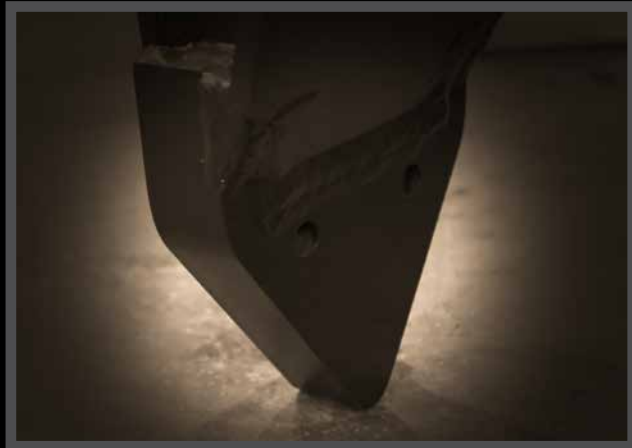




QUALITY IS OUR TOP PRIORITY

We are innovators. All of our grapples are made with only the highest quality steel and components, to provide you with the best and most durable products out there. Combined with our exceptional workmanship, we ensure the longevity of your attachment.

We have put our heart and soul in every detail to bring you the best and highest performing scrap attachments in the industry.



THE SMALLEST DETAILS MATTER MOST.



Level up your productivity with increased versatility and less downtime.

THE KING OF ROTATORS

WE'RE CALLED **ROTO-BEC** FOR A REASON.

Rotobec has been pushing the boundaries of innovation in the world of rotator design. We are well-known for our innovation and developments with the most advanced continuous 360° rotators. Our rotators are without a doubt the longest lasting ever made. They offer cost effective maintenance due to easily accessible greasing points and motor, allowing them to go further and protect your investment.

All of our rotators are fully sealed, allowing them to be fully submersed in up to 15 feet (5 meters) of water with the standard 360° rotator and a fully supported pinion gear. We are committed to delivering the most reliable rotators on the market, no matter where you are in the world.

Why settle for anything but the best?



THE ONE AND ONLY CDS TECHNOLOGY

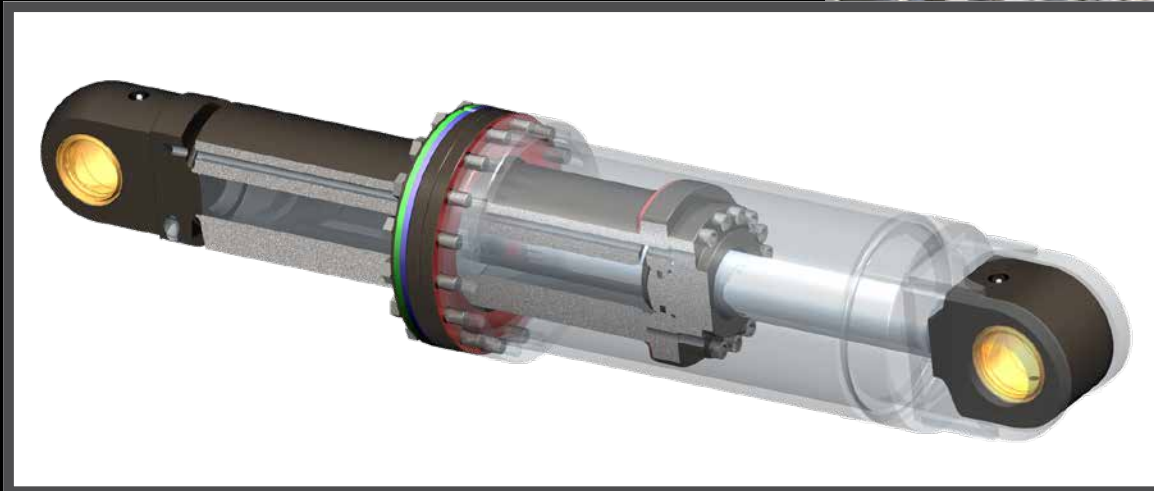
A CYLINDER FOR THE AGES. SELF CONTAINED HYDRAULICS.

Scrap handling is the toughest task a grapple can take on. The threat of damaged cylinders and hoses shutting down your operations is a problem faced daily by scrap material handlers. In order to protect your most precious asset, we have designed a cylinder that has revolutionized the industry.

Our cylinder contains an internal hydraulic channel that eliminates the need for a return hose. This self-contained system provides you with a cylinder that is better protected and more durable than any other option on the market.

Want less downtime and less damaged cylinders? Try our CDS technology for yourself. You will not look back.





KEEP A CLEAN MACHINE

360° OF PROTECTION INTEGRATED CYLINDER GUARD

Rotobec has the best guarded cylinder on the market which protects it from machine contamination. This innovative self-contained cylinder design has allowed us to incorporate a cylinder guard that provides protection from all 360° with integrated mechanical stop. With no need for an opening at the back of the guard for the return hose to pass through, Rotobec Orange Peel Grapples provide an unmatched level of protection. Reduce your downtime and step into the future of scrap handling.



The Rotobec Orange Peel Grapple

is recognized as the industry leader in both innovation and toughness. Their sleek, yet robust, design and standard 360° rotation make them a dream to own and operate. Available in 4-Tine, 5-Tine, and Mag-Grab configurations, Rotobec Orange Peel Grapples push the boundary of possibilities to a whole new level. Equipped with Rotobec's own high pressure cylinders, and one of the industry's only self-contained hydraulic fluid channeling system, these beasts are quickly revolutionizing the world of scrap handling. Increase your up-time, reduce your maintenance costs and dominate your competition.

Mag Grabs

With the same unparalleled performance and quality found in Rotobec Orange Peel Grapples, the Rotobec Mag-Grapple series will help you elevate your operations. Available in 4-tine configurations with magnet sizes ranging from 30" - 50" (762 mm - 1270 mm), we have the solution you deserve.



ORANGE PEEL GRAPPLES

FOUR TINE



FIVE TINE



MAG GRAB



Rotobec Poly Grabs are specially designed to handle scrap, waste and various materials, with excellent penetration and exceptional material gripping capabilities. These scrap attachments come standard with our built in-house RT rotator, with a robust pinion and crown gear design and rated at 6.3 ton lifting capacity. We offer both 4-tine and 5-tine configurations to ensure the best match for all your material handling needs, all equipped with our wear resistant tips to maximize your grapple's life. Equipped with Rotobec's own 4300 PSI (300 bar) hydraulic cylinders, and manufactured using high-tensile steel, our Poly Grab Grapple is quite simply the toughest around.

Medium Duty: Designed and manufactured with the same passion and attention to detail. This economical solution to scrap handling features the robust design Rotobec is known for, while incorporating speed and agility. Available in both 4 and 5 tine configurations, Rotobec Medium Duty Orange Peel Grapples help to bridge the size gap but maintain only the highest quality and durability. Don't just handle scrap, dominate it.

**ELEVATE
YOUR
GAME.**

POLY GRABS & MEDIUM DUTY GRAPPLES

**FOUR
TINE**



**FIVE
TINE**



RPA DEMOLITION

3 x 2
TINE



4 x 3
TINE



POWER ATTACHMENTS

The Rotobec Power Attachments (RPA) are up for anything. Each configuration is available with either a dangling rotator or one of Rotobec's incredible RGP positioned rotators. The *Demolition version* is by far the toughest member of the RPA family. Fabricated from thicker steel and featuring beefed-up guarding, this grapple is built to take a beating. The diversity of the RPA is simply unmatched by any other type of grapple available.

BUILT TO OUTLAST.

ROTOBEC DYNAMIC WARRANTY PACKAGE

Rotobec Orange Peel Grapples transformed the industry. And now, our new industry leading Dynamic Warranty Package offers unprecedented warranty coverage and unbeatable support.

Rotobec provides you the peace of mind you deserve so you can surpass the competition.

WARRANTY PACKAGE

**FULL
COVERAGE**

24
MONTHS
— OR —
4000
HOURS

**STRUCTURE
AND CYLINDERS**

36
MONTHS
— OR —
5000
HOURS

ORANGE PEEL JAW CONFIGURATIONS



ORANGE PEEL
FULLY-OPEN



ORANGE PEEL
SEMI-CLOSED



ORANGE PEEL
HALF-CLOSED



ORANGE PEEL
FULLY-CLOSED

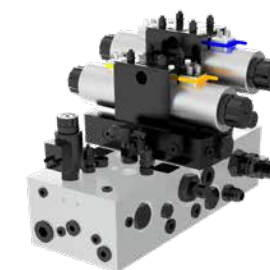
AVAILABLE ACCESSORIES/OPTIONS



MALE YOKE



FEMALE YOKE





VALVE ON SWIVEL (VOS)



OIL QUICK COUPLER

*This Dynamic Warranty Package excludes the Poly Grabs, Medium Duty and RPAs. Poly Grabs, Medium Duty and RPAs are covered by a separate warranty of 24 months/4000 hours. Refer to the warranty certificates for full terms and conditions.


ORANGE PEEL GRAPPLES

MODEL	Weight (including rotator)		Capacity		Maximum Opening	
	lb	kg	yd ³	m ³	in.	mm
SEMI-OPEN 4-TINE SERIES						
OP4S050-RT502OR4 	2,975	1,349	0.50	0.38	75	1903
OP4S075-RT502OR4	3,100	1,406	0.75	0.57	84	2136
OP4S100-RT502OR4	3,325	1,508	1.00	0.76	93 3/4	2382
OP4S125-RT1002OR4	4,470	2,028	1.25	0.96	93 1/4	2368
OP4S150-RT1002OR4	4,725	2,143	1.50	1.15	100	2537
OP4S200-RT1002OR4	5,035	2,284	2.00	1.53	112	2844
OP4S250-RT1002OR4	5,400	2,449	2.50	1.91	129	3276
OP4S300-RT1002OR4	7,125	3,232	3.00	2.29	130 3/4	3323
SEMI-OPEN 5-TINE SERIES						
OP5S040-RT502OR5 	3,465	1,571	0.52	0.40	74 1/2	1896
OP5S060-RT502OR5	3,620	1,642	0.78	0.60	83	2108
OP5S080-RT502OR5	3,895	1,766	1.04	0.80	92 1/2	2350
OP5S090-RT502OR5	5,065	2,297	1.18	0.90	92 1/2	2344
OP5S110-RT1002OR5	5,580	2,531	1.44	1.10	99	2516
OP5S140-RT1002OR5	5,965	2,706	1.83	1.40	112	2848
OP5S160-RT1002OR5	6,180	2,803	2.15	1.60	122	3094
OP5S200-RT1002OR5	6,405	2,905	2.62	2.00	128	3246

MEDIUM DUTY ORANGE PEEL GRAPPLES



MODEL	Weight (including rotator)		Capacity		Maximum Opening	
	lb	kg	yd ³	m ³	in.	mm
SEMI-OPEN 4-TINE SERIES						
OP4SM45-RT322OR4 	2,035	923	.59	.45	75 3/4	1925
OP4SM65-RT322OR4	2,190	993	.85	.65	88	2237
HALF-CLOSED 4-TINE SERIES						
OP4HM45-RT322OR4	2,270	1030	.59	.45	75 3/4	1925
OP4HM65-RT322OR4	2,445	1109	.85	.65	88	2237
SEMI-OPEN 5-TINE SERIES						
OP5SM45-RT322OR5 	2,380	1080	.59	.45	76	1924
OP5SM65-RT322OR5	2,570	1166	.85	.65	88	2237
HALF-CLOSED 5-TINE SERIES						
OP5HM45-RT322OR5	2,485	1127	.59	.45	76	1924
OP5HM65-RT322OR5	2,685	1218	.85	.75	87 1/2	2226

MAG GRABS

MODEL	Weight (including rotator and magnet)		Capacity		Maximum Opening		Other Possible Magnet Size*	
	lb	kg	yd ³	m ³	in.	mm	dia. in.	dia. mm
MAG GRAB 								
OPM4S075-RT502E02-M36	5,125	2,325	0.75	0.57	97	2467	30	762
OPM4S100-RT502E02-M40	5,565	2,524	1.00	0.76	102	2591	36	914
OPM4S124-RT502E02-M36	5,380	2,440	1.25	0.96	108	2741	40	1016
OPM4S125-RT1002E02-M40	7,185	3,259	1.25	0.96	113 1/4	2875	36	914
OPM4S150-RT1002E02-M44	7,975	3,617	1.50	1.15	118 1/2	3010	40	1016
OPM4S100HD-RT1002E02-M40	7,140	3,239	1.00	0.76	109 1/2	2780	36	914
OPM4S150HD-RT1002E02-M50	9,410	4,268	1.50	1.15	122 1/2	3111	44	1118
OPM4S200HD-RT1002E02-M50	9,900	4,491	2.00	1.53	133 3/4	3394	44	1118

* See Scrap Magnets for more information.


POLY GRAB GRAPPLES

MODEL	Weight (including rotator)		Capacity		Maximum Opening	
	lb	kg	yd ³	m ³	in.	mm
4-TINE SERIES						
OP4FL25-RT142OR4 	1135	515	0.33	0.25	55	1396
OP4FL35-RT142OR4	1205	547	0.46	0.35	67 3/4	1722
OP4FL50-RT142OR4	1635	742	0.65	0.50	70 1/2	1789
5-TINE SERIES						
OP5FL25-RT142OR5 	1,225	556	0.33	0.25	55	1396
OP5FL35-RT142OR5	1,300	590	0.46	0.35	67 1/2	1718
OP5FL50-RT142OR5	1,765	801	0.65	0.50	78	1982


RPA POWER ATTACHMENTS - DEMOLITION

MODEL	Weight (including rotator)		Capacity		Maximum Opening		Maximum Closing	
	lb	kg	yd ³	m ³	in.	mm	in.	mm
3 X 2 TINE								
RPA2030D32-RGP900A 	2,030	921	0.75	0.57	70	1779	7 1/2	189
RPA3045D32-RGP900	2,970	1,347	1.00	0.76	74 3/4	1899	9 3/4	246
RPA4570D32-RGP1300A	4,270	1,937	1.75	1.34	95 1/2	2424	12 1/4	314
RPA60100D32-RGP1702	7,055	3,200	3.50	2.68	114 1/2	2910	14 1/2	369
4 X 3 TINE								
RPA3045D43-RGP900 	3,270	1,483	1.25	0.96	7 3/4	1899	9 3/4	247
RPA4570D43-RGP1300A	4,615	2,093	2.00	1.53	95 1/2	2424	12 1/4	312
RPA60100D43-RGP1702	7,765	3,522	4.00	3.06	114 1/2	2910	14 1/2	368

SCRAP MAGNETS

MODEL	AMPS (cold)	WATTS (cold)	Weight		Capacity* #1 HM		Capacity* #2 HM		Turnings
			lb	kg	lb	kg	lb	kg	
Diameter 									
30 in. / 762 mm	20	4,600	950	431	475	215	325	147	150
36 in. / 914 mm	25	5,800	1,500	680	800	363	525	238	275
40 in. / 1016 mm	35	8,000	1,900	862	1,200	544	700	318	400
48 in. / 1219 mm	45	10,000	2,900	1,315	1,800	816	1,100	499	600
57 in. / 1448 mm	60	14,000	4,200	1,905	2,800	1,270	1,800	816	900
67 in. / 1702 mm	85	20,000	6,800	3,084	4,400	1,996	3,000	1,361	1400
72 in. / 1829 mm	109	25,000	8,500	3,856	5,500	2,495	3,700	1,678	1700
78 in. / 1981 mm	128	30,000	11,000	4,990	6,000	2,722	4,000	1,814	1900

* Material descriptions are for Iron and steel scrap, published by the Institute of Scrap and Steel, Washington, D.C. Capacities are based on tests under optimum conditions. Performance will vary with specific conditions.



Specifications and models may vary without notice. For the most accurate and up-to-date information, please visit our website or contact your regional sales representative.

ROTOBEC

■ At Rotobec, we believe true strength isn't about claiming victory - it's about showing up, every day, for those who count on us.

Like you, we've earned our place through hard work and commitment. And like you, we never take it for granted. Every bolt we tighten, every call we answer, every piece of equipment we build - it's all done with purpose, precision, and pride.

We believe reliability is the truest form of respect. It's what turns machines into trusted partners, and challenges into shared achievements.

Because when you lift others up, everyone rises.

That's what drives us to keep improving, keep listening, and keep building - not just stronger equipment, but stronger relationships.

Together, we aim higher. If it doesn't exist, we'll create it. If the horizon looks tough, we'll face it - side by side.

We are Rotobec.

The power that lifts you up.



ROTOBEC



CONTACT US

Eastern Canada & International

200 rue Industrielle
Sainte-Justine, QC CANADA
G0R 1Y0
T. (418) 383-3002

Eastern & Central USA

162 Rotobec Drive
Littleton, NH USA
03561
T. (603) 444-2103

Southern USA

10903 Shady Trail, Suite 115
Dallas, TX
75220
T. 855-383-3002, ext. 8091

Western Canada & USA

10-2660 Kyle Rd
West Kelowna, BC. CANADA
V1Z 2N1
T. 855-383-3002, ext. 8090

Brazil

Rua Carlos Essenfelder, 952
Bairro Boqueirão, Curitiba Paraná
CEP 81650-090
T. (41) 98852-5999